



[Partsref](#) / Technic Elements /

[Composite Bushings](#) Permanently lubricated - PTFE lined Resists shock loading, lightweight [PolygonComposites.com/b...](#)

[Right Angle Gearbox](#) Spiral Bevel, Helical Bevel, Worm for PT & Motion Control, 1-50 HP [www.diequa.com](#)

Ads by Google

### 32013 Technic Angle Connector #1

LDraw File: [\[32013.DAT\]](#)

Peeron: [Technic Angle Connector #1](#)

Technica: [Angle connector, #1](#)



### 32034 Technic Angle Connector #2

LDraw File: [\[32034.DAT\]](#)

Peeron: [Technic Angle Connector #2](#)

Technica: [Angle connector, #2 \(180deg\)](#)



### 32016 Technic Angle Connector #3

LDraw File: [\[32016.DAT\]](#)

Peeron: [Technic Angle Connector #3](#)

Technica: [Angle connector, #3 \(157.5deg\)](#)



### 924 Technic Angle Connector #4

LDraw File: [\[924.DAT\]](#)

Peeron: [Technic Angle Connector #4](#)



### 32015 Technic Angle Connector #5

LDraw File: [\[32015.DAT\]](#)

Peeron: [Technic Angle Connector #5](#)

Technica: [Angle connector, #5 \(112.5deg\)](#)



### 32014 Technic Angle Connector #6

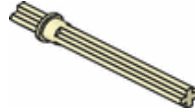
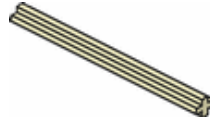
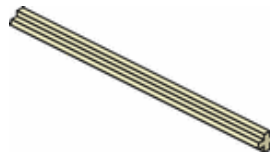
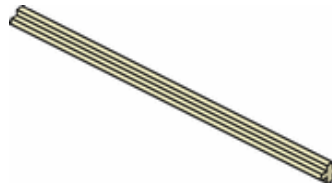
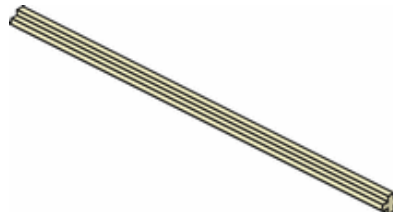
LDraw File: [\[32014.DAT\]](#)

Peeron: [Technic Angle Connector #6](#)

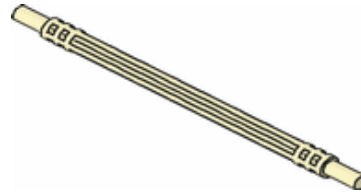
Technica: [Angle connector, #6 \(90deg\)](#)



**3704 Technic Axle 2**LDraw File: [\[3704.DAT\]](#)Peeron: [Technic Axle 2](#)Jessiman: [2 Axle](#)Technica: [Cross axle, 2L](#)**32062 Technic Axle 2 Notched**LDraw File: [\[32062.DAT\]](#)Keywords: [cross-axle](#), [bar](#), [cut](#), [slot](#)Peeron: [Technic Axle 2 Notched](#)**4519 Technic Axle 3**LDraw File: [\[4519.DAT\]](#)Peeron: [Technic Axle 3](#)Technica: [Cross axle, 3L](#)**6587 Technic Axle 3 with Stud**LDraw File: [\[6587.DAT\]](#)Peeron: [Technic Axle 3 with Stud](#)Jessiman: [\(no description\)](#)Jessiman: [3 Axle with Stud](#)Technica: [Cross axle w/ stud, 3.2L](#)**3705 Technic Axle 4**LDraw File: [\[3705.DAT\]](#)Peeron: [Technic Axle 4](#)Jessiman: [4 Axle](#)Jessiman: [\(no description\)](#)Technica: [Cross axle, 4L](#)**3705c01 Technic Axle 4 Threaded**LDraw File: [\[3705c01.DAT\]](#)Peeron: [Technic Axle 4 Threaded](#)**32073 Technic Axle 5**LDraw File: [\[32073.DAT\]](#)Peeron: [Technic Axle 5](#)Jessiman: [\(no description\)](#)Technica: [Cross axle, 5L](#)

**552 Technic Axle 5.5 With Stop**LDraw File: [\[552.DAT\]](#)Peeron: [Technic Axle 5.5 With Stop](#)**3706 Technic Axle 6**LDraw File: [\[3706.DAT\]](#)Peeron: [Technic Axle 6](#)Jessiman: [6 Axle](#)Technica: [Cross axle, 6L](#)**3707 Technic Axle 8**LDraw File: [\[3707.DAT\]](#)Peeron: [Technic Axle 8](#)Jessiman: [8 Axle](#)Technica: [Cross axle, 8L](#)**3737 Technic Axle 10**LDraw File: [\[3737.DAT\]](#)Peeron: [Technic Axle 10](#)Jessiman: [10 Axle](#)**3737c01 Technic Axle 10 Threaded**LDraw File: [\[3737c01.DAT\]](#)Peeron: [Technic Axle 10 Threaded](#)**3708 Technic Axle 12**LDraw File: [\[3708.DAT\]](#)Peeron: [Technic Axle 12](#)Jessiman: [12 Axle](#)**32199 Technic Axle Flexible 11**LDraw File: [\[32199.DAT\]](#)Peeron: [Technic Axle Flexible 11](#)

Technica: [Flexible cross axle, 11L](#)



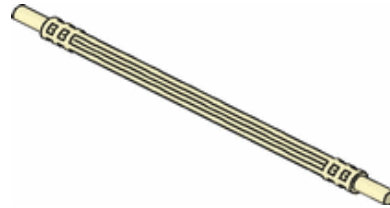
---

### 32200 Technic Axle Flexible 12

LDraw File: [\[32200.DAT\]](#)

Peeron: [Technic Axle Flexible 12](#)

Technica: [Flexible cross axle, 12L](#)



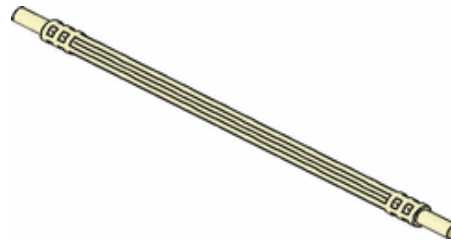
---

### 32201 Technic Axle Flexible 14

LDraw File: [\[32201.DAT\]](#)

Peeron: [Technic Axle Flexible 14](#)

Technica: [Flexible cross axle, 14L](#)



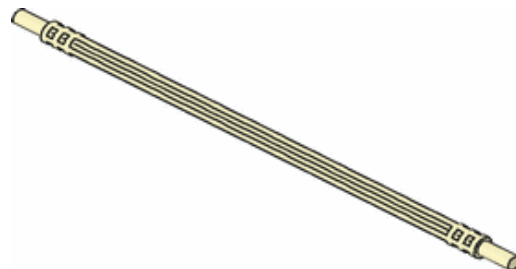
---

### 32202 Technic Axle Flexible 16

LDraw File: [\[32202.DAT\]](#)

Peeron: [Technic Axle Flexible 16](#)

Technica: [Flexible cross axle, 16L](#)



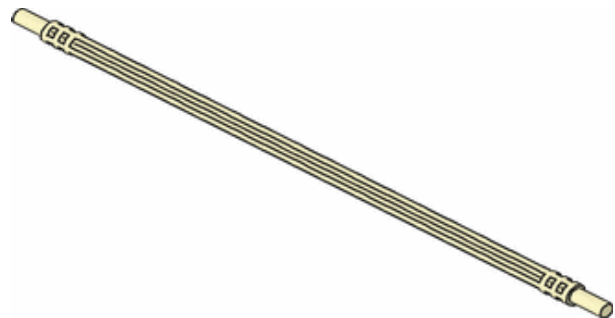
---

### 32235 Technic Axle Flexible 19

LDraw File: [\[32235.DAT\]](#)

Peeron: [Technic Axle Flexible 19](#)

Technica: [Flexible cross axle, 19L](#)



---

### 6538 Technic Axle Joiner

LDraw File: [\[6538.DAT\]](#)

Peeron: [Technic Axle Joiner](#)  
Jessiman: [Axle Extender](#)  
Technica: [Axle extender 96](#)

---



### 6536 Technic Axle Joiner Perpendicular

LDraw File: [\[6536.DAT\]](#)  
Peeron: [Technic Axle Joiner Perpendicular](#)  
Jessiman: [Axle Joiner Perpendicular](#)

---



### 32184 Technic Axle Joiner Perpendicular 3L

LDraw File: [\[32184.DAT\]](#)  
Peeron: [Technic Axle Joiner Perpendicular 3L](#)

---



### 32068 Technic Axle Joiner Perpendicular 3 Long

LDraw File: [\[32068.DAT\]](#)  
Peeron: [Technic Axle Joiner Perpendicular 3 Long](#)

---



### 32291 Technic Axle Joiner Perpendicular Double

LDraw File: [\[32291.DAT\]](#)  
Peeron: [Technic Axle Joiner Perpendicular Double](#)

---



### 4698 Technic Axle Nut

LDraw File: [\[4698.DAT\]](#)  
Peeron: [Technic Axle Nut](#)  
Jessiman: [Nut](#)

---



### 3749 Technic Axle Pin

LDraw File: [\[3749.DAT\]](#)  
Peeron: [Technic Axle Pin](#)  
Jessiman: [\(no description\)](#)  
Jessiman: [Axle Pin](#)

---

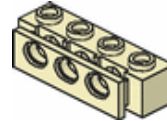
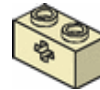
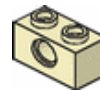
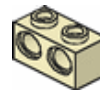
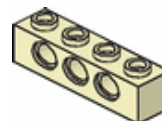


### 2736 Technic Axle Towball

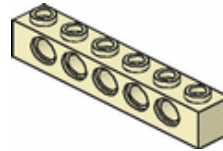
LDraw File: [\[2736.DAT\]](#)  
Peeron: [Technic Axle Towball](#)  
Jessiman: [Axle Towball](#)  
Technica: [Ball joint, w/ axle](#)

---

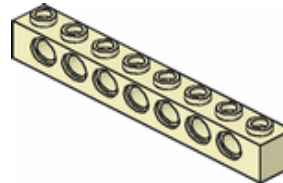


**2907 Technic Ball with Grooves**LDraw File: [\[2907.DAT\]](#)Peeron: [Technic Ball with Grooves](#)Jessiman: [Ball with Grooves](#)Technica: [Gyro ball, 8t](#)**2989 Technic Brick 1 x 4 with Holes and Bumper Holder**LDraw File: [\[2989.DAT\]](#)Peeron: [Bumper Holder](#)**6541 Technic Brick 1 x 1 with Hole**LDraw File: [\[6541.DAT\]](#)Peeron: [Technic Brick 1 x 1 with Hole](#)Jessiman: [\(no description\)](#)Jessiman: [1 x 1 Brick with Hole](#)Technica: [Beam, 1 x 1](#)**32064 Technic Brick 1 x 2 with Axlehole**LDraw File: [\[32064.DAT\]](#)Peeron: [Technic Brick 1 x 2 with Axlehole](#)Technica: [Beam, 2 x 1, w/ cross hole](#)**3700 Technic Brick 1 x 2 with Hole**LDraw File: [\[3700.DAT\]](#)Peeron: [Technic Brick 1 x 2 with Hole](#)Jessiman: [1 x 2 Brick with Hole](#)Technica: [Beam, 2 x 1](#)Vattima: [1 X 2 Technic Girder Brick](#)**32000 Technic Brick 1 x 2 with Holes**LDraw File: [\[32000.DAT\]](#)Peeron: [Technic Brick 1 x 2 with Holes](#)Technica: [Beam, 2 x 1, w/ 2 holes](#)**3701 Technic Brick 1 x 4 with Holes**LDraw File: [\[3701.DAT\]](#)Peeron: [Technic Brick 1 x 4 with Holes](#)Jessiman: [1 x 4 Brick with Holes](#)Technica: [Beam, 4 x 1](#)

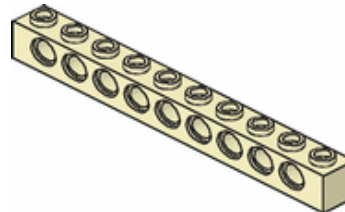
---

**3894 Technic Brick 1 x 6 with Holes**LDraw File: [\[3894.DAT\]](#)Peeron: [Technic Brick 1 x 6 with Holes](#)Jessiman: [1 x 6 Brick with Holes](#)Technica: [Beam, 6 x 1](#)

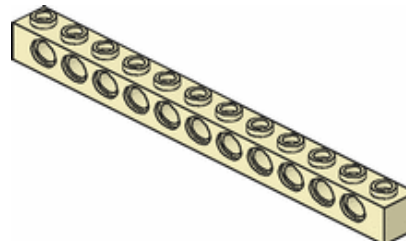
---

**3702 Technic Brick 1 x 8 with Holes**LDraw File: [\[3702.DAT\]](#)Peeron: [Technic Brick 1 x 8 with Holes](#)Jessiman: [1 x 8 Brick with Holes](#)Technica: [Beam, 8 x 1](#)

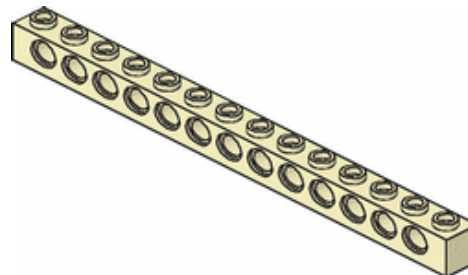
---

**2730 Technic Brick 1 x 10 with Holes**LDraw File: [\[2730.DAT\]](#)Peeron: [Technic Brick 1 x 10 with Holes](#)Jessiman: [1 x 10 Brick with Holes](#)

---

**3895 Technic Brick 1 x 12 with Holes**LDraw File: [\[3895.DAT\]](#)Peeron: [Technic Brick 1 x 12 with Holes](#)Jessiman: [1 x 12 Brick with Holes](#)

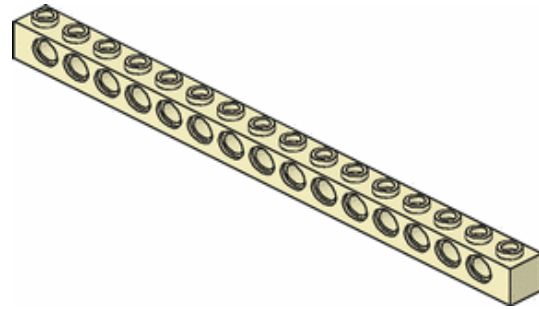
---

**32018 Technic Brick 1 x 14 with Holes**LDraw File: [\[32018.DAT\]](#)Peeron: [Technic Brick 1 x 14 with Holes](#)

---

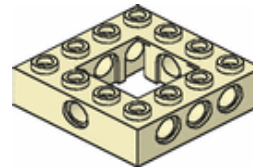
**3703 Technic Brick 1 x 16 with Holes**LDraw File: [\[3703.DAT\]](#)Peeron: [Technic Brick 1 x 16 with Holes](#)

Jessiman: [1 x 16 Brick with Holes](#)



### 32324 Technic Brick 4 x 4 with Open Center 2 x 2

LDraw File: [\[32324.DAT\]](#)

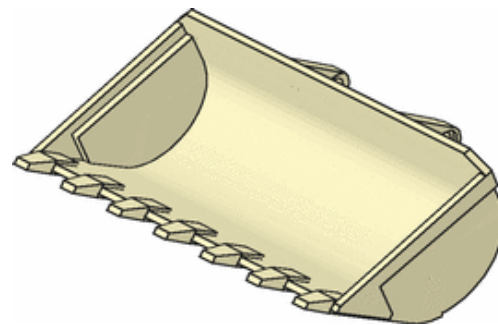


### 2951 Technic Bucket 10 x 8

LDraw File: [\[2951.DAT\]](#)

Peeron: [Technic Bucket 10 x 8](#)

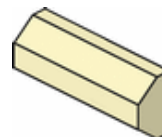
Jessiman: [Small Digger Bucket](#)



### 70961 Technic Bumper 2 x 4 Rubber

LDraw File: [\[70961.DAT\]](#)

Peeron: [Bumper Rubber Brick 2 x 4](#)



### 3713 Technic Bush

LDraw File: [\[3713.DAT\]](#)

Peeron: [Technic Bush](#)

Jessiman: [Bush](#)

Technica: [Bushing](#)



### 4265c Technic Bush 1/2 Smooth

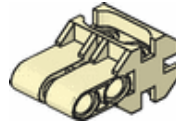
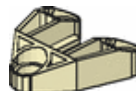
LDraw File: [\[4265c.DAT\]](#)

Keywords: [small pulley](#), [half-bushing](#), [ring](#), [round](#)

Peeron: [Technic Bush 1/2 Smooth](#)





**4265a Technic Bush 1/2 Type I**LDraw File: [\[4265a.DAT\]](#)Peeron: [Technic Bush 1/2 Type I](#)**4265b Technic Bush 1/2 Type II**LDraw File: [\[4265b.DAT\]](#)Keywords: [small pulley](#), [half-bushing](#), [half bushing](#), [cross-axle](#)Peeron: [Technic Bush 1/2 Type II](#)**6575 Technic Cam**LDraw File: [\[6575.DAT\]](#)Peeron: [Technic Cam](#)Jessiman: [Cam](#)Technica: [Cam](#)**3651 Technic Connector**LDraw File: [\[3651.DAT\]](#)Peeron: [Technic Connector](#)Jessiman: [Connector](#)Technica: [Piston rod, 77](#)**133 Technic Connector 2 x 3 with Ball Socket**LDraw File: [\[133.DAT\]](#)Keywords: [Slizer](#), [Throwbots](#), [Roboriders](#), [Bionicle](#), [shoulder](#), [wrist](#), [joint](#), [ankle](#), [perpendicular](#)**32137 Technic Connector Block 3 x 2 x 2**LDraw File: [\[32137.DAT\]](#)Peeron: [Technic Connector Block 3 x 2 x 2](#)Technica: [Connector block, modular](#)**111 Technic Connector Block 3 x 3 Triangular**LDraw File: [\[111.DAT\]](#)Peeron: [Technic Connector Block 3 x 3 Triangular](#)**32310 Technic Connector Block 3 x 5 x 1 & 2/3**LDraw File: [\[32310.DAT\]](#)Peeron: [Technic Connector Block 3 x 5 x 1 & 2/3](#)

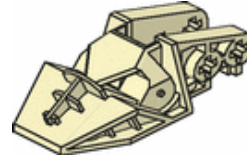


### 32165 Technic Connector Block 3 x 6 x 1 & 2/3

LDraw File: [\[32165.DAT\]](#)

Peeron: [Technic Connector Block 3 x 6 x 1 & 2/3](#)

Technica: [Triangular head, 6 x 3](#)

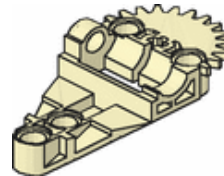


### 32166 Technic Connector Block 3 x 6 x 1 & 2/3 Gearbox

LDraw File: [\[32166.DAT\]](#)

Peeron: [Technic Connector Block 3 x 6 x 1 & 2/3 Gearbox](#)

Technica: [Triangular gearbox, 3 x 6, w/ gear](#)



### 44 Technic Connector Toggle Joint Smooth

LDraw File: [\[44.DAT\]](#)

Peeron: [Technic Connector Toggle Joint Smooth](#)



### 4273 Technic Connector Toggle Joint Toothed

LDraw File: [\[4273.DAT\]](#)

Peeron: [Technic Connector Toggle Joint Toothed](#)

Jessiman: [Locking Connector](#)

Technica: [Toggle joint, 81](#)



### 32039 Technic Connector with Axlehole

LDraw File: [\[32039.DAT\]](#)

Peeron: [Technic Connector with Axlehole](#)

Technica: [Catch, w/ cross hole](#)

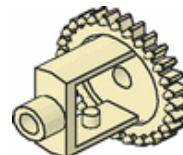


### 73071 Technic Differential

LDraw File: [\[73071.DAT\]](#)

Peeron: [Technic Differential](#)

Technica: [Differential, 24t, crown, 80](#)



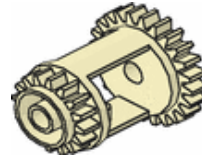
### 6573 Technic Differential New

LDraw File: [\[6573.DAT\]](#)

Peeron: [Technic Differential New](#)

Jessiman: [Differential](#)

Technica: [Differential, 16t + 24t](#)



---

### 2958 Technic Disc 3 x 3 with Axlehole

LDraw File: [\[2958.DAT\]](#)

Keywords: [town](#), [outdoor](#), [umbrella table](#)

Peeron: [Town Outdoor Umbrella Table](#)



---

### 2852 Technic Engine Connecting Rod

LDraw File: [\[2852.DAT\]](#)

Peeron: [Technic Engine Connecting Rod](#)

Jessiman: [Connecting Rod](#)

Technica: [Piston rod 90](#)



---

### 2853 Technic Engine Crankshaft

LDraw File: [\[2853.DAT\]](#)

Peeron: [Technic Engine Crankshaft](#)

Jessiman: [Crankshaft](#)



---

### 2854 Technic Engine Crankshaft Centre

LDraw File: [\[2854.DAT\]](#)

Peeron: [Technic Engine Crankshaft Centre](#)

Jessiman: [Crankshaft Centre](#)



---

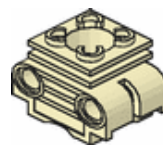
### 2850 Technic Engine Cylinder Head

LDraw File: [\[2850.DAT\]](#)

Peeron: [Technic Engine Cylinder Head](#)

Jessiman: [Cylinder Head](#)

Technica: [Engine cylinder, 3 x 2](#)



---

### 2851 Technic Engine Piston Round

LDraw File: [\[2851.DAT\]](#)

Peeron: [Technic Engine Piston Round](#)

Jessiman: [Piston - Round](#)

Technica: [Piston, round](#)

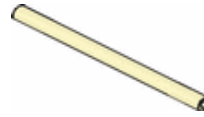


---

### 75 Technic Flex-System Hose 120LDU Long (open file for usage guide)

LDraw File: [\[75.DAT\]](#)

Peeron: [Technic Flex System Hose](#)



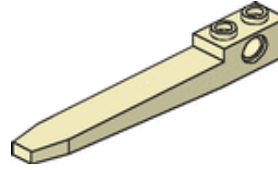
### 2823 Technic Forklift Fork

LDraw File: [\[2823.DAT\]](#)

Peeron: [Technic Forklift Fork](#)

Jessiman: [Forklift Forks](#)

Vattima: [1 X 2 Technic Girder Brick with Forklift Blade](#)



### 50 Technic Friction Peg with Towball

LDraw File: [\[50.DAT\]](#)

Peeron: [Technic Friction Peg with Towball](#)



### 3647 Technic Gear 8 Tooth

LDraw File: [\[3647.DAT\]](#)

Peeron: [Technic Gear 8 Tooth](#)

Jessiman: [8 Tooth Gear Wheel](#)

Technica: [Gear, 8t](#)



### 6589 Technic Gear 12 Tooth Bevel

LDraw File: [\[6589.DAT\]](#)

Peeron: [Technic Gear 12 Tooth Bevel](#)

Jessiman: [New Bevel Gear](#)



### 32270 Technic Gear 12 Tooth Double Bevel

LDraw File: [\[32270.DAT\]](#)

Peeron: [Technic Gear 12 Tooth Double Bevel](#)



### 741 Technic Gear 14 Tooth

LDraw File: [\[741.DAT\]](#)



### 4143 Technic Gear 14 Tooth Bevel

LDraw File: [\[4143.DAT\]](#)

Peeron: [Technic Gear 14 Tooth Bevel](#)

Jessiman: [Bevel Gear](#)



Technica: [Gear, 14t, bevel](#)

---

#### 4019 Technic Gear 16 Tooth

LDraw File: [\[4019.DAT\]](#)

Peeron: [Technic Gear 16 Tooth](#)

Jessiman: [16 Tooth Gear Wheel](#)

Technica: [Gear, 16t](#)



#### 6542 Technic Gear 16 Tooth with Clutch

LDraw File: [\[6542.DAT\]](#)

Peeron: [Technic Gear 16 Tooth with Clutch](#)

Jessiman: [Clutch Gear Wheel](#)

Technica: [Conical gear, 16t](#)



#### 32198 Technic Gear 20 Tooth Bevel

LDraw File: [\[32198.DAT\]](#)

Peeron: [Technic Gear 20 Tooth Bevel](#)

Technica: [Gear, 20t, bevel](#)



#### 32296 Technic Gear 20 Tooth Double Bevel

LDraw File: [\[32296.DAT\]](#)

Peeron: [Technic Gear 20 Tooth Double Bevel](#)

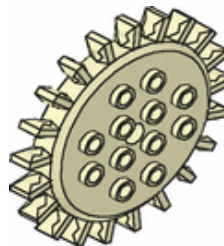
Technica: [Tire, 81.6 x 49](#)



#### 742 Technic Gear 21 Tooth

LDraw File: [\[742.DAT\]](#)

Keywords: [gear](#), [pre-technic](#), [Samsonite](#)



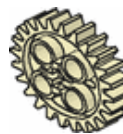
#### 3648 Technic Gear 24 Tooth

LDraw File: [\[3648.DAT\]](#)

Peeron: [Technic Gear 24 Tooth](#)

Jessiman: [24 Tooth Gear Wheel](#)

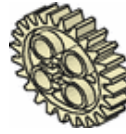
Technica: [Gear, 24t, 77](#)



#### 3648a Technic Gear 24 Tooth

LDraw File: [\[3648a.DAT\]](#)

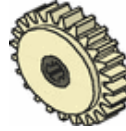
Peeron: [Technic Gear 24 Tooth \(needs work\)](#)



### 60c01 Technic Gear 24 Tooth Clutch

LDraw File: [\[60c01.DAT\]](#)

Peeron: [Technic Gear 24 Tooth Clutch](#)



### 3650a Technic Gear 24 Tooth Crown

LDraw File: [\[3650a.DAT\]](#)

Peeron: [Technic Gear 24 Tooth Crown](#)

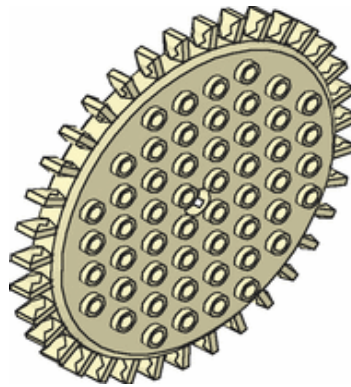
Technica: [Gear, 24t, crown, 91](#)



### 743 Technic Gear 35 Tooth

LDraw File: [\[743.DAT\]](#)

Keywords: [gear](#), [pre-technic](#), [Samsonite](#)



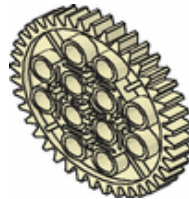
### 3649 Technic Gear 40 Tooth

LDraw File: [\[3649.DAT\]](#)

Peeron: [Technic Gear 40 Tooth](#)

Jessiman: [40 Tooth Gear Wheel](#)

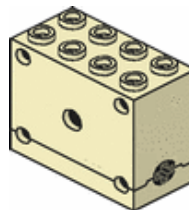
Technica: [Gear, 40t](#)

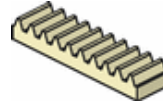
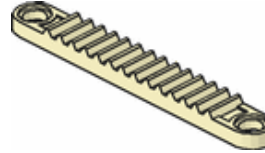
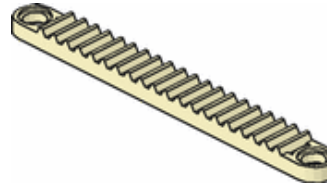
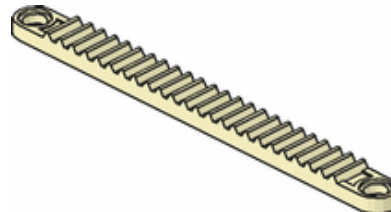
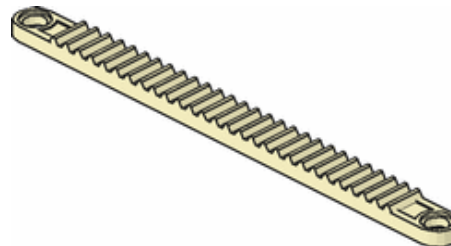


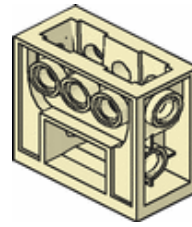
### 768 Technic Gear Block 2 x 8 x 3

LDraw File: [\[768.DAT\]](#)

Peeron: [Technic Gear Block 2 x 8 x 3](#)



**3743 Technic Gear Rack 1 x 4**LDraw File: [\[3743.DAT\]](#)Peeron: [Technic Gear Rack 1 x 4](#)Jessiman: [1 x 4 Rack](#)Technica: [Rack, 10t](#)**6630 Technic Gear Rack 1 x 8 with Holes**LDraw File: [\[6630.DAT\]](#)Peeron: [Technic Gear Rack 1 x 8 with Holes](#)Jessiman: [1 x 8 Holed Rack](#)Technica: [Rack, 14t, w/ holes](#)Vattima: [1 X 6 technic Rack with Holes on End](#)**6592 Technic Gear Rack 1 x 10 with Holes**LDraw File: [\[6592.DAT\]](#)Peeron: [Technic Gear Rack 1 x 10 with Holes](#)Jessiman: [10 x 1 Holed Rack](#)Technica: [Rack, 20t, w/ holes](#)Vattima: [1 X 8 Technic Rack with Holes on End](#)**32132 Technic Gear Rack 1 x 12 with Holes**LDraw File: [\[32132.DAT\]](#)**32185 Technic Gear Rack 1 x 14 with Holes**LDraw File: [\[32185.DAT\]](#)Peeron: [Technic Gear Rack 1 x 14 with Holes](#)**6588 Technic Gearbox 2 x 4 x 3 & 1/3**LDraw File: [\[6588.DAT\]](#)Peeron: [Technic Gearbox 2 x 4 x 7](#)Jessiman: [Worm Gear Casing](#)Technica: [Gear, 12t, bevel](#)




---

#### 424 Technic Handle

LDraw File: [\[424.DAT\]](#)

Peeron: [Technic Handle](#)




---

#### 2908 Technic Helicopter Rotor Holder

LDraw File: [\[2908.DAT\]](#)

Peeron: [Technic Helicopter Rotor Holder](#)

Jessiman: [Helicopter Rotor Holder](#)

Technica: [Gyro ring w/ 4 ball joints](#)



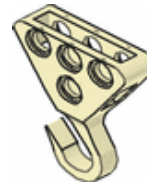

---

#### 30 Technic Hook Large Metallic

LDraw File: [\[30.DAT\]](#)

Peeron: [Technic Hook Large Metallic](#)

Peeron: [Technic Hook Large Metallic](#)




---

#### 2741 Technic Large Steering Wheel

LDraw File: [\[2741.DAT\]](#)




---

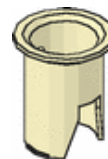
#### 2999 Technic Large Wheel Hub

LDraw File: [\[2999.DAT\]](#)

Peeron: [Technic Large Wheel Hub](#)

Jessiman: [Large Car Wheel Holder](#)

Technica: [Locking tube](#)




---

#### 6632 Technic Liftarm 1 x 3

LDraw File: [\[6632.DAT\]](#)

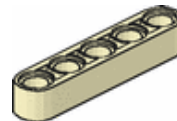
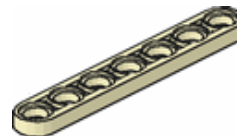
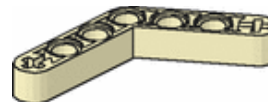
Peeron: [Technic Liftarm 1 x 3](#)

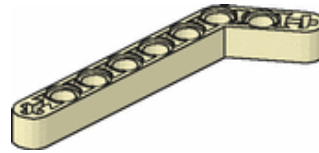
Jessiman: [1 x 3 Plate Holed](#)

Technica: [Liftarm, 3 x 1](#)

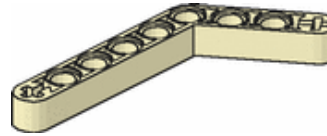




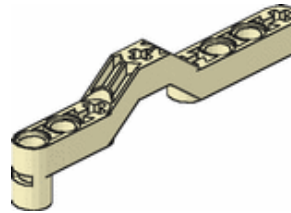
**32523 Technic Liftarm 1 x 3 Straight**LDraw File: [\[32523.DAT\]](#)Peeron: [Technic Liftarm 1 x 3 Straight](#)**2825 Technic Liftarm 1 x 4**LDraw File: [\[2825.DAT\]](#)Peeron: [Technic Liftarm 1 x 4](#)Jessiman: [Liftarm](#)Technica: [Liftarm, 4 x 1](#)**32017 Technic Liftarm 1 x 5**LDraw File: [\[32017.DAT\]](#)Peeron: [Technic Liftarm 1 x 5](#)Technica: [Half beam, 5 x 1](#)**32316 Technic Liftarm 1 x 5 Straight**LDraw File: [\[32316.DAT\]](#)Peeron: [Technic Liftarm 1 x 5 Straight](#)**32063 Technic Liftarm 1 x 6**LDraw File: [\[32063.DAT\]](#)Peeron: [Technic Liftarm 1 x 6](#)Technica: [Half beam, 6 x 1](#)**32065 Technic Liftarm 1 x 7**LDraw File: [\[32065.DAT\]](#)Peeron: [Technic Liftarm 1 x 7](#)Technica: [Half beam, 7 x 1](#)**32348 Technic Liftarm 1 x 7 Bent**LDraw File: [\[32348.DAT\]](#)Peeron: [Technic Liftarm 1 x 7 Bent](#)Technica: [Angle beam \[4 x 4\] x 1 \(143.13deg\)](#)**152 Technic Liftarm 1 x 9 Bent**LDraw File: [\[152.DAT\]](#)Peeron: [Technic Liftarm 1 x 9 Bent](#)



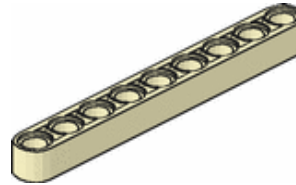
---

**6629 Technic Liftarm 1 x 9 Bent**LDraw File: [\[6629.DAT\]](#)Peeron: [Technic Liftarm 1 x 9 Bent](#)Peeron: [Technic Liftarm 1 x 9 Bent](#)Technica: [Angle beam \[6 x 4\] x 1 \(143.13deg\)](#)

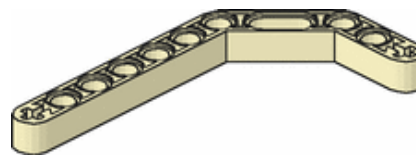
---

**32079 Technic Liftarm 1 x 9 Offset Cross**LDraw File: [\[32079.DAT\]](#)Peeron: [Technic Liftarm 1 x 9 Offset Cross](#)

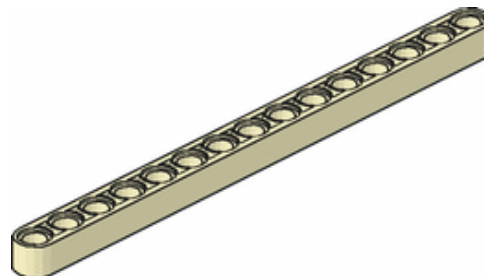
---

**120 Technic Liftarm 1 x 9 Straight**LDraw File: [\[120.DAT\]](#)

---

**32009 Technic Liftarm 1 x 11.5 Double Bent**LDraw File: [\[32009.DAT\]](#)Peeron: [Technic Liftarm 1 x 11.5 Double Bent](#)Technica: [Angle beam \[7 x 4.24 x 2\] x 1 \(135deg, 135deg\)](#)

---

**32278 Technic Liftarm 1 x 15 Straight**LDraw File: [\[32278.DAT\]](#)Peeron: [Technic Liftarm 1 x 15 Straight](#)

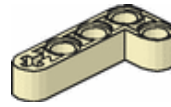
---

**32140 Technic Liftarm 2 x 4 L Shape**

LDraw File: [\[32140.DAT\]](#)

Peeron: [Technic Liftarm 2 x 4 L Shape](#)

Technica: [Angle beam \[4 x 2\] x 1 \(90deg\)](#)



### 32056 Technic Liftarm 3 x 3 L Shape

LDraw File: [\[32056.DAT\]](#)

Peeron: [Technic Liftarm 3 x 3 L Shape](#)



### 32249 Technic Liftarm 3 x 3 L Shape with Quarter Circle

LDraw File: [\[32249.DAT\]](#)

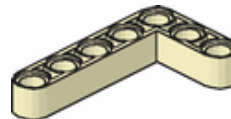
Peeron: [Technic Liftarm 3 x 3 L Shape with Quarter Circle](#)

Technica: [Liftarm, \[3 x 3\] x 1, quarter circle \(90deg\)](#)



### 153 Technic Liftarm 3 x 5 L Shape

LDraw File: [\[153.DAT\]](#)

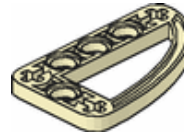


### 32250 Technic Liftarm 3 x 5 L Shape with Quarter Oval

LDraw File: [\[32250.DAT\]](#)

Peeron: [Technic Liftarm 3 x 5 L Shape with Quarter Oval](#)

Technica: [Liftarm, \[5 x 3\] x 1, quarter oval \(90deg\)](#)

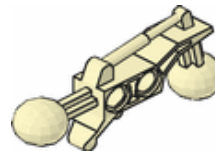


### 32173 Technic Liftarm 2 x 7 with 2 Ball Joints

LDraw File: [\[32173.DAT\]](#)

Keywords: [slizer](#), [throwbots](#), [bionicle](#), [arm](#), [thigh](#), [leg](#), [hip](#), [towball](#)

Peeron: [Technic Liftarm 1 x 7 with 2 Ball Joints](#)

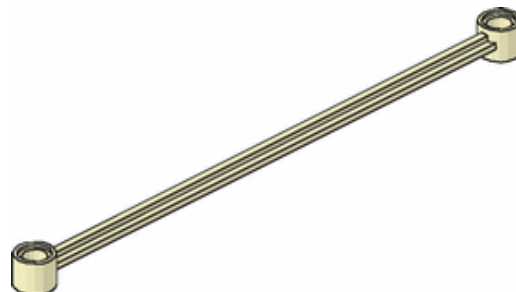


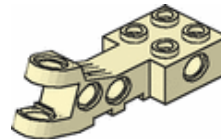
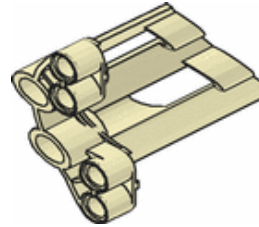
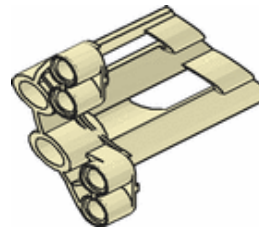
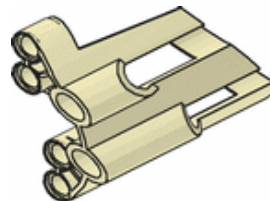
### 2637 Technic Link 16L

LDraw File: [\[2637.DAT\]](#)

Peeron: [Technic Link 16L](#)

Jessiman: [Crane Thingy](#)

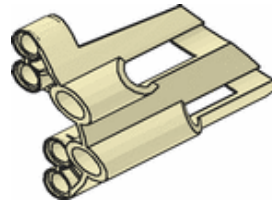


**3711 Technic Link Chain**LDraw File: [\[3711.DAT\]](#)Peeron: [Technic Link Chain](#)Jessiman: [Chain Link](#)Technica: [Chain link](#)**3873 Technic Link Tread**LDraw File: [\[3873.DAT\]](#)Peeron: [Technic Link Tread](#)Jessiman: [Tractor Tread Link](#)Technica: [Tread link](#)**2904 Technic Motorcycle Pivot**LDraw File: [\[2904.DAT\]](#)Peeron: [Technic Motorcycle Pivot](#)Jessiman: [Motorcycle Pivot](#)**22749 Technic Panel Fairing #1**LDraw File: [\[22749.DAT\]](#)**32190 Technic Panel Fairing #1**LDraw File: [\[32190.DAT\]](#)Peeron: [Technic Panel Fairing #1](#)Technica: [Fairing, #1](#)**22750 Technic Panel Fairing #2**LDraw File: [\[22750.DAT\]](#)**32191 Technic Panel Fairing #2**

LDraw File: [\[32191.DAT\]](#)

Peeron: [Technic Panel Fairing #2](#)

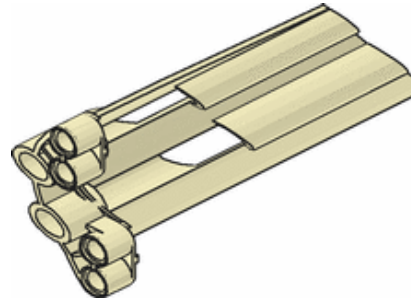
Technica: [Fairing, #2](#)



---

### 22972 Technic Panel Fairing #3

LDraw File: [\[22972.DAT\]](#)



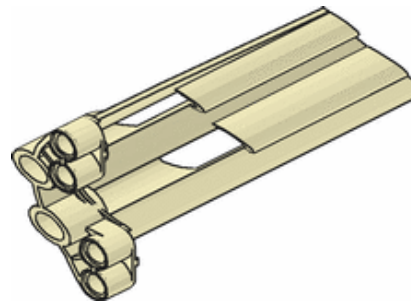
---

### 32188 Technic Panel Fairing #3

LDraw File: [\[32188.DAT\]](#)

Peeron: [Technic Panel Fairing #3](#)

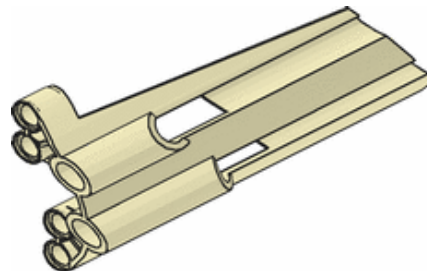
Technica: [Fairing, #3](#)



---

### 22973 Technic Panel Fairing #4

LDraw File: [\[22973.DAT\]](#)



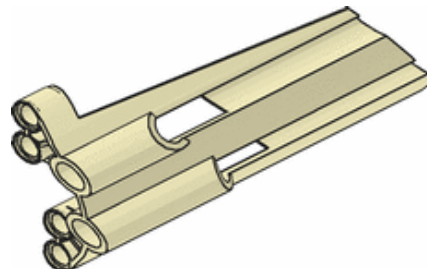
---

### 32189 Technic Panel Fairing #4

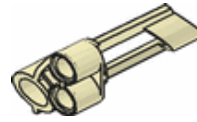
LDraw File: [\[32189.DAT\]](#)

Peeron: [Technic Panel Fairing #4](#)

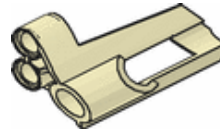
Technica: [Fairing, #4](#)



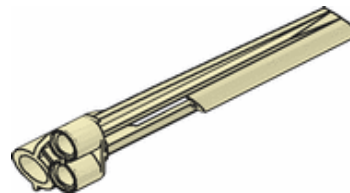
---

**32527 Technic Panel Fairing #5**LDraw File: [\[32527.DAT\]](#)

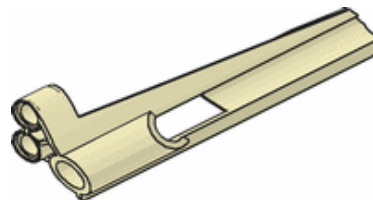
---

**32528 Technic Panel Fairing #6**LDraw File: [\[32528.DAT\]](#)

---

**32534 Technic Panel Fairing #7**LDraw File: [\[32534.DAT\]](#)

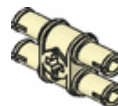
---

**32535 Technic Panel Fairing #8**LDraw File: [\[32535.DAT\]](#)

---

**3673 Technic Pin**LDraw File: [\[3673.DAT\]](#)Peeron: [Technic Pin](#)Jessiman: [Pin](#)Jessiman: [\(no description\)](#)

---

**32136 Technic Pin 3L Double**LDraw File: [\[32136.DAT\]](#)Peeron: [Technic Pin 3L Double](#)Technica: [Double friction connector, 3L, w/ cross hole](#)

---

**4274 Technic Pin 1/2**LDraw File: [\[4274.DAT\]](#)Peeron: [Technic Pin 1/2](#)Jessiman: [\(no description\)](#)

Jessiman: [Half Pin](#)

Technica: [Connector peg, 1L](#)

---

### 32002 Technic Pin 3/4

LDraw File: [\[32002.DAT\]](#)

Peeron: [Technic Pin 3/4](#)



### 32557 Technic Pin Joiner Dual Perpendicular

LDraw File: [\[32557.DAT\]](#)



### 75535 Technic Pin Joiner Round

LDraw File: [\[75535.DAT\]](#)

Peeron: [Technic Pin Joiner Round](#)

Technica: [Axle sleeve](#)



### 6558 Technic Pin Long with Friction

LDraw File: [\[6558.DAT\]](#)

Peeron: [Technic Pin Long with Friction](#)

Jessiman: [Black Pin \(3 long\)](#)



### 32054 Technic Pin Long with Stop Bush

LDraw File: [\[32054.DAT\]](#)

Peeron: [Technic Pin Long with Stop Bush](#)

Technica: [Friction snap, 3L, w/ cross hole](#)



### 4459 Technic Pin with Friction

LDraw File: [\[4459.DAT\]](#)

Peeron: [Technic Pin with Friction](#)

Jessiman: [Pin with Friction](#)

Technica: [Friction connector, 2L, 82](#)



### 2780 Technic Pin with Friction and Slots

LDraw File: [\[2780.DAT\]](#)



### 4263 Technic Plate 1 x 4 with Holes

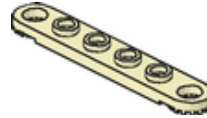
LDraw File: [\[4263.DAT\]](#)

Peeron: [Technic Plate 1 x 4 with Holes](#)  
 Jessiman: [\(no description\)](#)  
 Jessiman: [Plate 1 x 4 with Holes](#)  
 Technica: [Plate w/ tothing, 4 x 1](#)



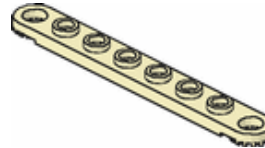
#### 4262 Technic Plate 1 x 6 with Holes

LDraw File: [\[4262.DAT\]](#)  
 Peeron: [Technic Plate 1 x 6 with Holes](#)  
 Jessiman: [\(no description\)](#)  
 Jessiman: [Plate 1 x 6 with Holes](#)  
 Technica: [Plate w/ tothing, 6 x 1](#)



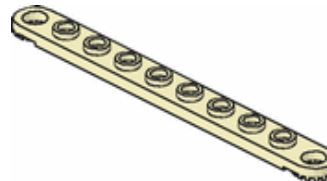
#### 4442 Technic Plate 1 x 8 with Holes

LDraw File: [\[4442.DAT\]](#)  
 Peeron: [Technic Plate 1 x 8 with Holes](#)  
 Jessiman: [1 x 8 Plate with Holes](#)  
 Technica: [Plate w/ tothing, 8 x 1](#)



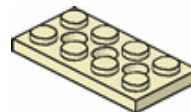
#### 2719 Technic Plate 1 x 10 with Holes

LDraw File: [\[2719.DAT\]](#)  
 Peeron: [Technic Plate 1 x 10 with Holes](#)  
 Jessiman: [1 x 10 Plate with Holes](#)  
 Technica: [Plate w/ tothing, 10 x 1](#)



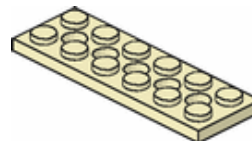
#### 3709b Technic Plate 2 x 4 with Holes

LDraw File: [\[3709b.DAT\]](#)  
 Peeron: [Technic Plate 2 x 4 with Holes](#)



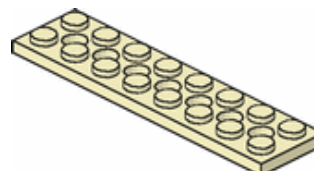
#### 32001 Technic Plate 2 x 6 with Holes

LDraw File: [\[32001.DAT\]](#)  
 Peeron: [Technic Plate 2 x 6 with Holes](#)  
 Technica: [Technic plate, 6 x 2](#)  
 Vattima: [2 X 6 Technic Plate](#)



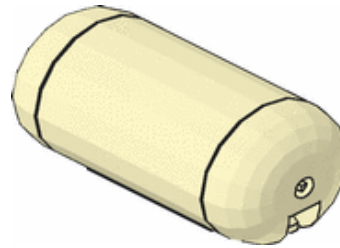
#### 3738 Technic Plate 2 x 8 with Holes

LDraw File: [\[3738.DAT\]](#)  
 Peeron: [Technic Plate 2 x 8 with Holes](#)  
 Jessiman: [2 x 8 Plate with Holes](#)  
 Technica: [Technic plate, 8 x 2](#)





---

**67c01 Technic Pneumatic Airtank**LDraw File: [\[67c01.DAT\]](#)Peeron: [Technic Pneumatic Airtank](#)

---

**6553 Technic Pole Reverser Handle**LDraw File: [\[6553.DAT\]](#)Peeron: [Technic Pole Reverser Handle](#)Jessiman: [Pole Reverser Handle](#)Technica: [Catch](#)

---

**3736 Technic Pulley Large**LDraw File: [\[3736.DAT\]](#)Peeron: [Technic Pulley Large](#)Jessiman: [Large Pulley \(Steering Wheel\)](#)

---

**78 Technic Ribbed Hose 120LDU Long (open file for usage guide)**LDraw File: [\[78.DAT\]](#)Peeron: [Technic Ribbed Hose](#)

---

**2712 Technic Rotor 3 Blade**LDraw File: [\[2712.DAT\]](#)Peeron: [Technic Rotor 3 Blade](#)Jessiman: [3 Blade Rotor](#)Technica: [Rotor, 3-pronged, 86](#)

---

**2711 Technic Rotor 2 Blade with 2 Studs**LDraw File: [\[2711.DAT\]](#)Peeron: [Technic Rotor 2 Blade with 2 Studs](#)Jessiman: [2 Blade Rotor](#)Technica: [Plate w/ tothing, 5 x 1](#)

---

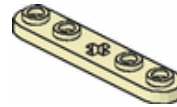
**32124 Technic Rotor 2 Blade with 4 Studs**

LDraw File: [\[32124.DAT\]](#)

Peeron: [Technic Rotor 2 Blade with 4 Studs](#)

Technica: [Rounded plate, 5 x 1 \(no tothing\)](#)

---

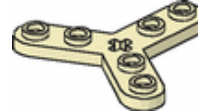


### 32125 Technic Rotor 3 Blade with 6 Studs

LDraw File: [\[32125.DAT\]](#)

Peeron: [Technic Rotor 3 Blade with 6 Studs](#)

---



### 2717 Technic Seat 3 x 2 Base

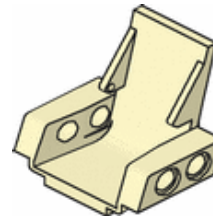
LDraw File: [\[2717.DAT\]](#)

Peeron: [Technic Seat 3 x 2 Base](#)

Jessiman: [Seat](#)

Vattima: [Large Technic Action Figure Chair](#)

---



### 732 Technic Shock Absorber 6.5L, Cylinder

LDraw File: [\[732.DAT\]](#)

Peeron: [Technic Shock Absorber 6.5L, Cylinder](#)

---



### 731 Technic Shock Absorber 6.5L, Piston Rod with Spring

LDraw File: [\[731.DAT\]](#)

Peeron: [Technic Shock Absorber 6.5L, Piston Rod with Spring](#)

---

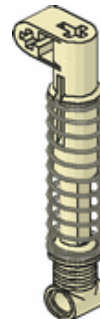


### 2909c01 Technic Shock Absorber 9.5L, (Complete Assembly Shortcut)

LDraw File: [\[2909c01.DAT\]](#)

Peeron: [Technic Shock Absorber 9.5L, \(Complete Assembly Shortcut\)](#)

---



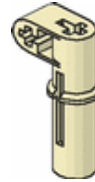
### 2909 Technic Shock Absorber 9.5L, Cylinder

LDraw File: [\[2909.DAT\]](#)

Peeron: [Technic Shock Absorber 9.5L, Cylinder](#)

---

Jessiman: [Long Suspension Arm Top](#)



### 109 Technic Shock Absorber 9.5L, Piston Rod

LDraw File: [\[109.DAT\]](#)



### 110 Technic Shock Absorber 9.5L, Spring

LDraw File: [\[110.DAT\]](#)



### 32181c02 Technic Shock Absorber 10L Damped, (Complete Assembly Shortcut)

LDraw File: [\[32181c02.DAT\]](#)

Peeron: [Technic Shock Absorber 10L Damped, \(Complete Assembly Shortcut\)](#)



### 32181 Technic Shock Absorber 10L Damped, Cylinder

LDraw File: [\[32181.DAT\]](#)

Peeron: [Technic Shock Absorber 10L Damped, Cylinder](#)

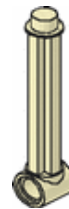
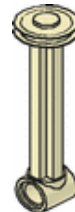
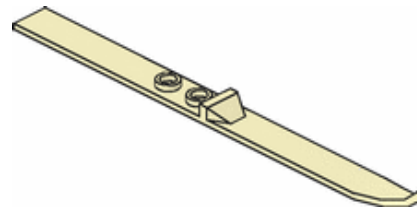
Technica: [Pneumatic dampening cylinder](#)



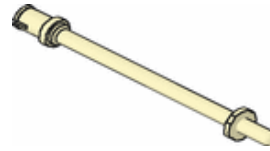
### 32182 Technic Shock Absorber 10L Damped, Cylinder Cap

LDraw File: [\[32182.DAT\]](#)



**32181c01 Technic Shock Absorber 10L Damped, Cylinder with Cap Shortcut**LDraw File: [\[32181c01.DAT\]](#)**32040 Technic Shock Absorber 10L Damped, Gasket**LDraw File: [\[32040.DAT\]](#)**32183 Technic Shock Absorber 10L Damped, Piston Rod**LDraw File: [\[32183.DAT\]](#)**32183c01 Technic Shock Absorber 10L Damped, Piston Rod w/ Gasket Shortcut**LDraw File: [\[32183c01.DAT\]](#)**108 Technic Shock Absorber 10L Damped, Spring**LDraw File: [\[108.DAT\]](#)**2713 Technic Ski**LDraw File: [\[2713.DAT\]](#)Jessiman: [Ski](#)**2714 Technic Ski Pole**LDraw File: [\[2714.DAT\]](#)

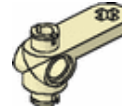
Peeron: [Technic Ski Pole](#)  
Jessiman: [Ski Pole](#)



---

#### 4261 Technic Steering Arm

LDraw File: [\[4261.DAT\]](#)  
Peeron: [Technic Steering Arm](#)  
Jessiman: [Steering Arm](#)  
Technica: [Steering arm, 81](#)



---

#### 6540 Technic Steering Arm Large

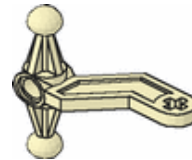
LDraw File: [\[6540.DAT\]](#)  
Peeron: [Technic Steering Arm Large](#)  
Jessiman: [Large Steering Arm](#)



---

#### 2737 Technic Steering Arm Tall

LDraw File: [\[2737.DAT\]](#)



---

#### 32069 Technic Steering Arm with Connectors

LDraw File: [\[32069.DAT\]](#)  
Peeron: [Technic Steering Arm with Connectors](#)



---

#### 2790 Technic Steering Gear Holder

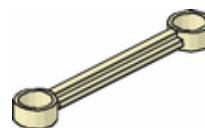
LDraw File: [\[2790.DAT\]](#)  
Peeron: [Technic Steering Rack](#)  
Jessiman: [Steering Rack](#)



---

#### 2739 Technic Steering Link

LDraw File: [\[2739.DAT\]](#)  
Peeron: [Technic Steering Link](#)  
Jessiman: [Large Steering Connecting Rod](#)



---

#### 2791 Technic Steering Rack

LDraw File: [\[2791.DAT\]](#)  
Peeron: [Technic Steering Gear Holder](#)

Jessiman: [Steering Gear Holder](#)



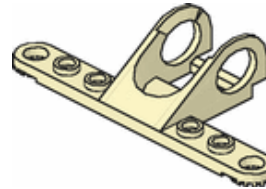
---

### 2792 Technic Steering Top

LDraw File: [\[2792.DAT\]](#)

Peeron: [Technic Steering Top](#)

Jessiman: [Steering Top](#)



---

### 2819 Technic Steering Wheel Small

LDraw File: [\[2819.DAT\]](#)

Peeron: [Technic Steering Wheel Small](#)

Jessiman: [Small Steering Wheel](#)

Technica: [Steering wheel, 3D](#)

Vattima: [1 X 1 Round Brick with Small Technic Steering Wheel](#)



---

### 6641 Technic Transmission Changeover Catch

LDraw File: [\[6641.DAT\]](#)

Peeron: [Technic Transmission Changeover Catch](#)

Technica: [Changeover catch](#)



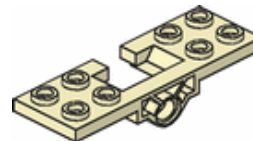
---

### 6631 Technic Transmission Changeover Plate 2 x 6

LDraw File: [\[6631.DAT\]](#)

Peeron: [Technic Transmission Changeover Plate 2 x 6](#)

Technica: [Changeover plate, 2 x 6](#)



---

### 6539 Technic Transmission Driving Ring

LDraw File: [\[6539.DAT\]](#)

Peeron: [Technic Transmission Driving Ring](#)

Jessiman: [Clutch Centre](#)

Technica: [Driving ring](#)



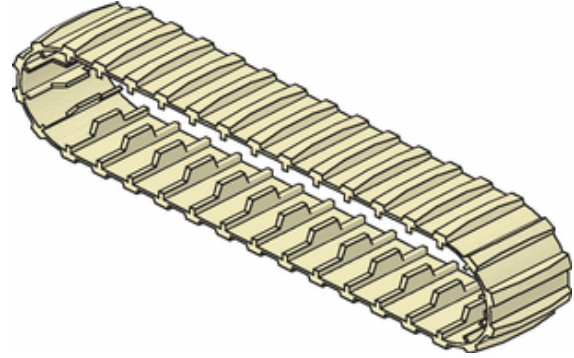
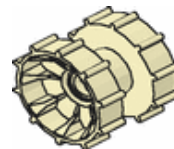
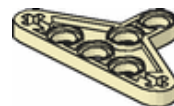
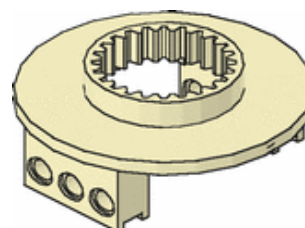
---

### 32187 Technic Transmission Driving Ring Extension

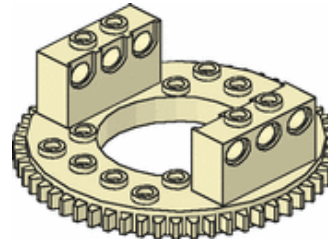
LDraw File: [\[32187.DAT\]](#)

Peeron: [Technic Transmission Driving Ring Extension](#)

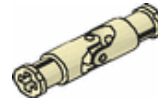


**680c01 Technic Tread (Complete Shortcut)**LDraw File: [\[680c01.DAT\]](#)Peeron: [Technic Tread \(Complete Shortcut\)](#)**682 Technic Tread Segment Curved**LDraw File: [\[682.DAT\]](#)**680 Technic Tread Segment Straight**LDraw File: [\[680.DAT\]](#)Peeron: [Technic Tread Segment Straight](#)**681 Technic Tread Segment Transition**LDraw File: [\[681.DAT\]](#)**32007 Technic Tread Sprocket Wheel**LDraw File: [\[32007.DAT\]](#)Peeron: [Technic Tread Sprocket Wheel](#)Technica: [Sprocket, 10t](#)**2905 Technic Triangle**LDraw File: [\[2905.DAT\]](#)Peeron: [Technic Triangle](#)Jessiman: [Triangle](#)Technica: [Triangle](#)**2856 Technic Turntable Base**LDraw File: [\[2856.DAT\]](#)Peeron: [Technic Turntable Base](#)Jessiman: [Turntable Base](#)

---

**2855 Technic Turntable Top**LDraw File: [\[2855.DAT\]](#)Peeron: [Technic Turntable Top](#)Jessiman: [Turntable Top](#)Technica: [Turntable, 24t id, 56t od](#)

---

**9244 Technic Universal Joint (Complete Assembly Shortcut)**LDraw File: [\[9244.DAT\]](#)Peeron: [Technic Universal Joint \(Complete Assembly Shortcut\)](#)Technica: [Universal joint](#)

---

**91 Technic Universal Joint Centre**LDraw File: [\[91.DAT\]](#)

---

**90 Technic Universal Joint End**LDraw File: [\[90.DAT\]](#)

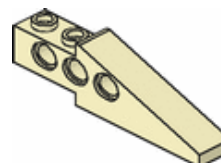
---

**4185 Technic Wedge Belt Wheel**LDraw File: [\[4185.DAT\]](#)Peeron: [Technic Wedge Belt Wheel](#)Jessiman: [Wedge Belt Wheel](#)Technica: [Pulley, medium](#)Vattima: [Technic Flywheel](#)

---

**70162 Technic Wedge Belt Wheel Tyre**LDraw File: [\[70162.DAT\]](#)Peeron: [Technic Wedge Belt Wheel Tyre](#)Technica: [O-ring](#)

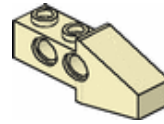
---

**2744 Technic Wing Back**LDraw File: [\[2744.DAT\]](#)Peeron: [Technic Wing Back](#)Jessiman: [Wing Back](#)Technica: [Beam w/ bracket \[2 x 2\] x1 \(135deg\)](#)Vattima: [1 X 2 Technic Girder Brick with 1 X 4](#)



[Sloped Brick](#)

---

**2743 Technic Wing Front**LDraw File: [\[2743.DAT\]](#)Peeron: [Technic Wing Front](#)Jessiman: [Wing Front](#)Technica: [Beam, sloped, 4 x 1](#)**4716 Technic Worm Screw**LDraw File: [\[4716.DAT\]](#)Peeron: [Technic Worm Screw](#)Jessiman: [Worm Gear](#)Technica: [Gear, 5t, worm](#)[Terms of Use](#) | [Feedback](#)©2002 LUGNET. All rights reserved. - hosted by [steinbruch.info GbR](#)