
Transformer Darwin (#001)

Jean Chagas Vaz

Transformer-DARwIn-OP MAnual

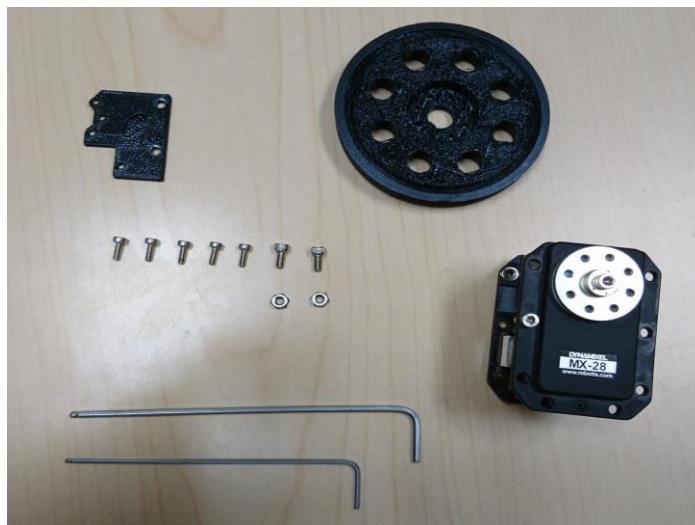
DARwIn-OP (Spring/Summer 2017)

1 ASSEMBLY

1.1 FRONT WHEELS

This document is a manual intent to instruct the proper way to install the DARwIn-OP wheels

- Tools
 - M2 hex key
 - M3 hex key
- For one wheel, the materials are:
 - 5 (M2) bolts
 - 2 (M3) bolts
 - Wheel
 - Fixture plate
 - MX-28T Dynamixel



- . Disassemble the plastic cover from DARwin's metal frame

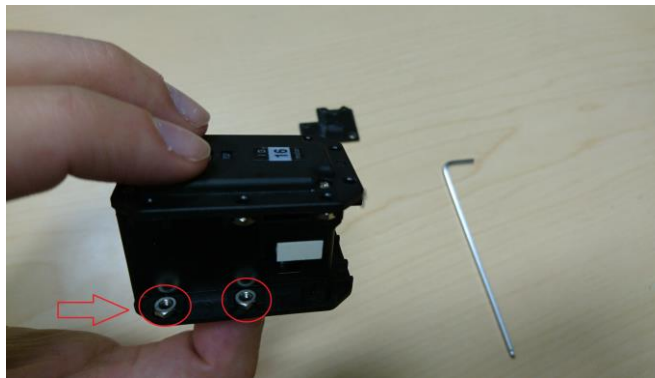




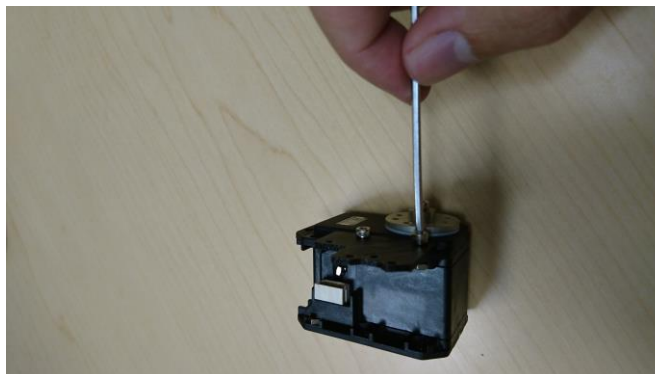
- Fix the “fixture plate” onto the MX-28T Dynamixel



- Position the nuts at correct slots.



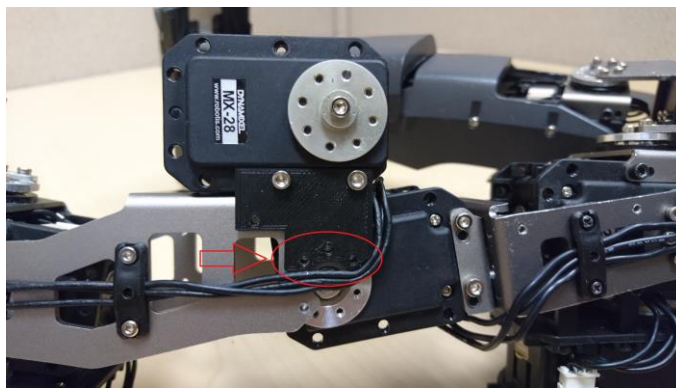
- Then tie up the “fixture plate” with the 3M bolts



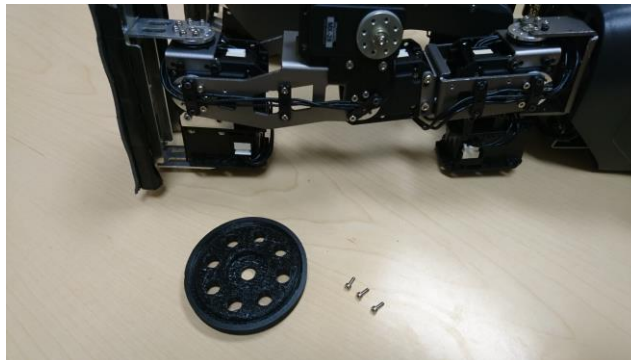
- Remove the little hatch that holds the cable



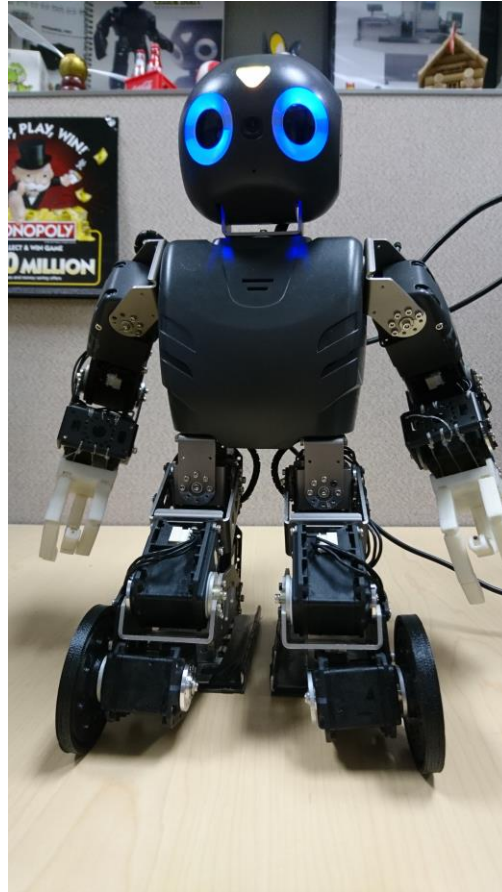
- Place the conjunct on the frame and tie up with 3 (2M) bolts



- Tie up the wheel to the MX-28T by using (2M bolts)



- Repeat same steps to assemble another wheel



1.2 PLOW PLATES

NOT DESIGNED YET!