

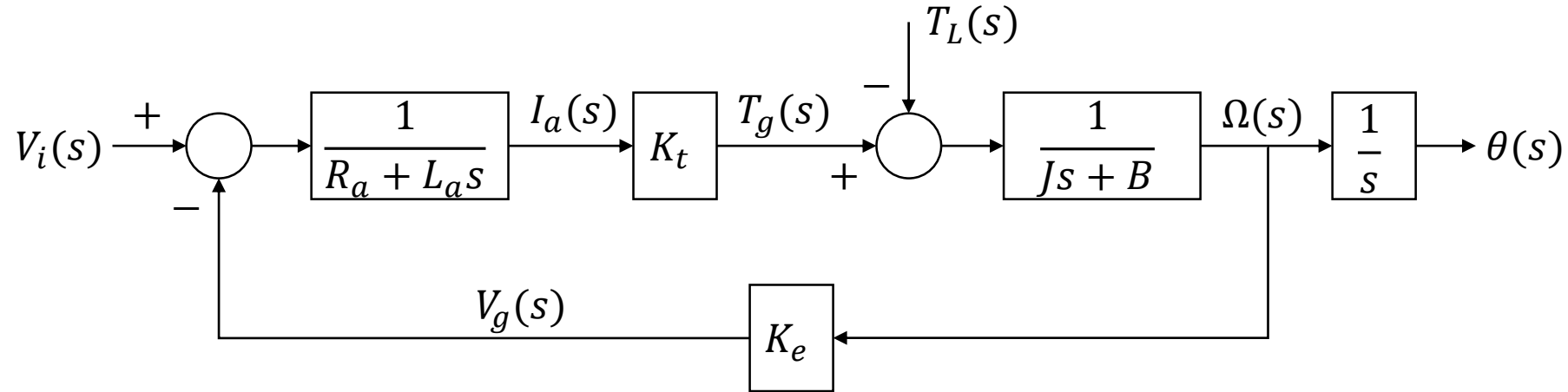
# ME729 Advanced Robotics - Homework #5

3/5/2018

Sangsin Park, Ph.D.

**Email me *a pdf file* by next Monday 6 p.m.**

1. There is a DC motor's block diagram.  $V_i$ ,  $R_a$ ,  $L_a$ ,  $K_t$ ,  $T_L$ ,  $J$ ,  $B$ , and  $K_e$  are a input voltage, an armature resistance, an armature inductance, a torque constant, a load torque, a moment of inertia of the rotor, and a back-EMF constant, respectively. In addition,  $I_a$ ,  $T_g$ ,  $\Omega$ ,  $\theta$ , and  $V_g$  are an armature current, a generated torque, the shaft angular velocity, the shaft angular position, and a generated voltage, respectively. [5]



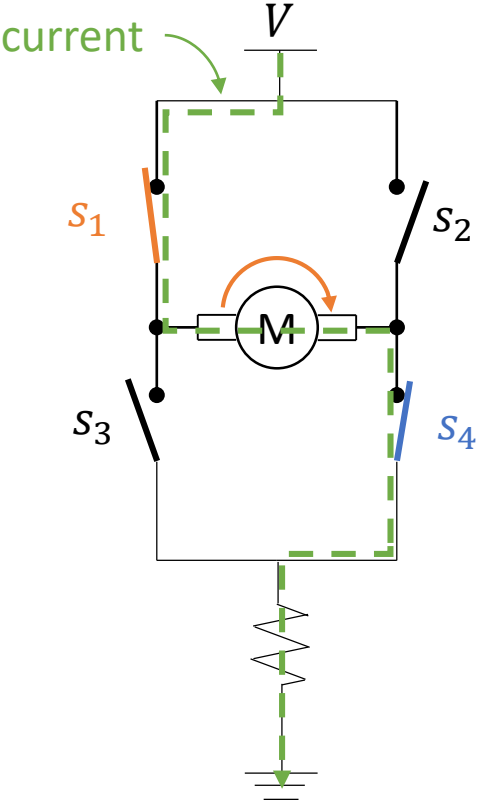
1) Calculate the following transfer function, if  $T_L(s) = 0$ . [3]

$$\frac{\theta(s)}{V_i(s)} = ?$$

2) Explain why is the  $V_g$  generated while the motor is running. [2]

2. A motor is rotating about clock-wise direction. If you want to stop the motor rotation, there are five combinations of the switches. Find out the combinations. [5]

[Clock-Wise rotation]



$S_1$	On
$S_2$	Off
$S_3$	Off
$S_4$	On

stop →

$S_1$	
$S_2$	
$S_3$	
$S_4$	

$S_1$	
$S_2$	
$S_3$	
$S_4$	

$S_1$	
$S_2$	
$S_3$	
$S_4$	

$S_1$	
$S_2$	
$S_3$	
$S_4$	

$S_1$	
$S_2$	
$S_3$	
$S_4$	